



02/05/2024

### Background

The Midwest Conservation Blueprint is a basemap of priority lands and waters for conservation in the Midwest and reflects 20+ social and environmental values of regional importance. It is a primary product of the Midwest Landscape Initiative, which is a regional conservation collaborative, and an interjurisdictional subcommittee of the Midwest Association of Fish and Wildlife Agencies, that helps coordinate voluntary conservation actions and investments across the Midwest.

You can learn more about the Midwest Landscape Initiative at <https://www.mlimidwest.org/> and more about the Midwest Conservation Blueprint at <https://mcap-fws.hub.arcgis.com/pages/midwest-conservation-blueprint>.

### Findings

Please see the map on the subsequent page, which includes the proposed project area overlaid on the Midwest Conservation Blueprint. That map and our analysis of the Blueprint's input data demonstrates that:

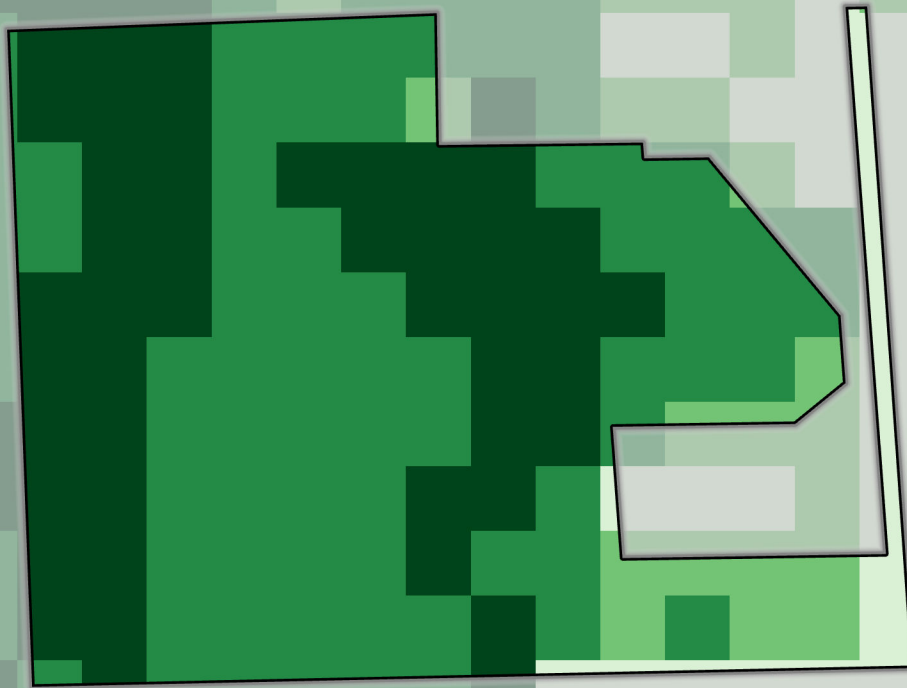
- 92% of the project area is prioritized by the Blueprint, meaning it is aligned to regionally significant conservation needs.
- The proposed impacted area for this project consists of high values for terrestrial habitat connectivity, indicating the site's importance for the movement of species.
- The site has above-average values for climate resiliency, which could be further improved by restoration activities which increase the diversity and connectedness of the landscape.
- The stream portion of the site has high values for stream health. The sedge meadow portion contains high values for perennial grasslands. These high values show the regional importance of the project area for these two habitat types.
- The area has above-average values for water quality and availability, a measure of the importance of a watershed in providing drinking water to humans. This indicates that any improvements to water quality will positively impact both the ecosystem *and* humans.
- Several areas in the project site county, as well as additional areas in the surrounding counties, are of high priority for equitable environmental health. Several census tracts in these areas have been designated as vulnerable by the Climate and Economic Justice Screening Tool, as well as the CDC's Social Vulnerability Index.



# Nature-Based Solutions in Wetlands

92% of proposed project focal areas fall within the Highest Priority, High Priority, Medium Priority, and Important for Connectivity categorizations of the Midwest Conservation Blueprint.

- Wetland Boundary
- Midwest Conservation Blueprint Priority Areas
  - Priority for Conservation
  - Medium Conservation Priority
  - High Conservation Priority
  - Highest Conservation Priority
  - Important for Connectivity



02/02/2024  
NAD83 (2011) UTM Zone 15N  
Produced by: Rachael Carlberg



0 0.04 0.07 0.14  
Kilometers

0 0.04 0.07 0.14  
Miles